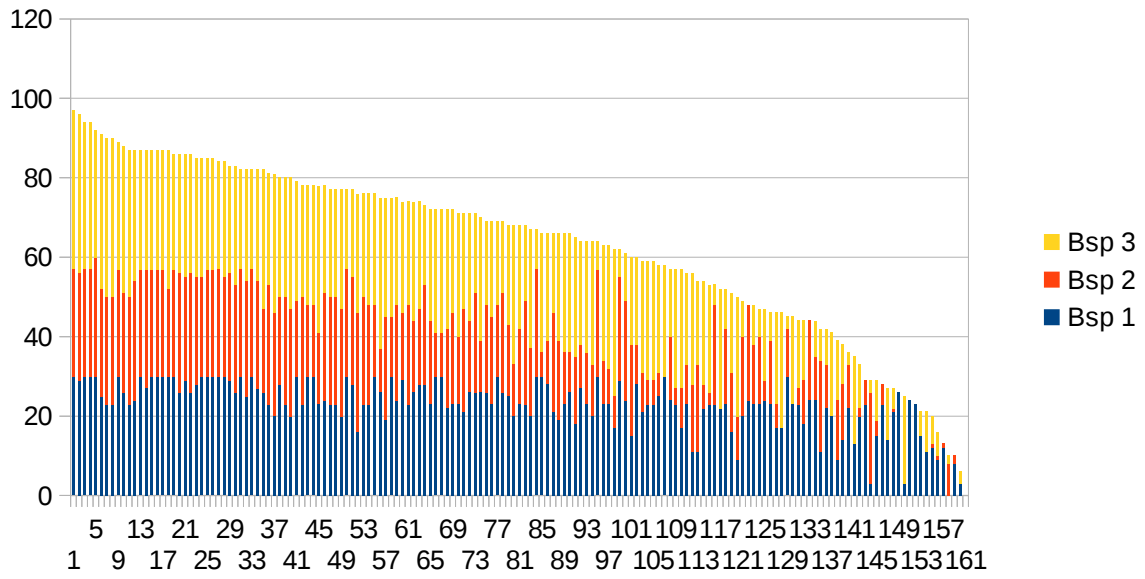
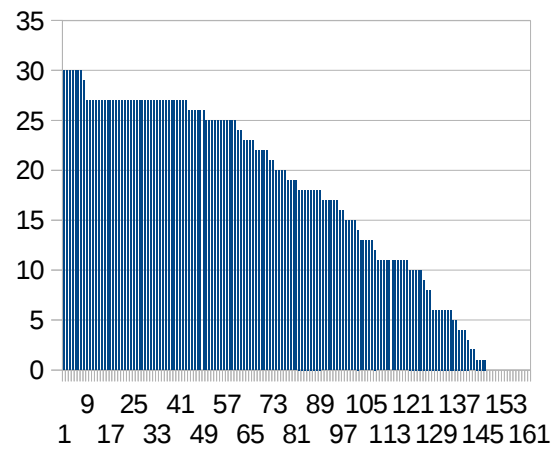
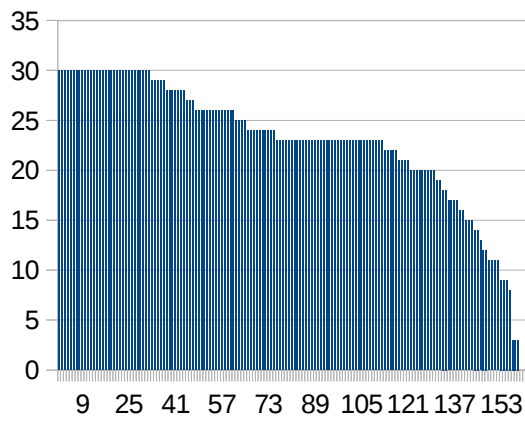


Methoden 1. Test - Punkteverteilung

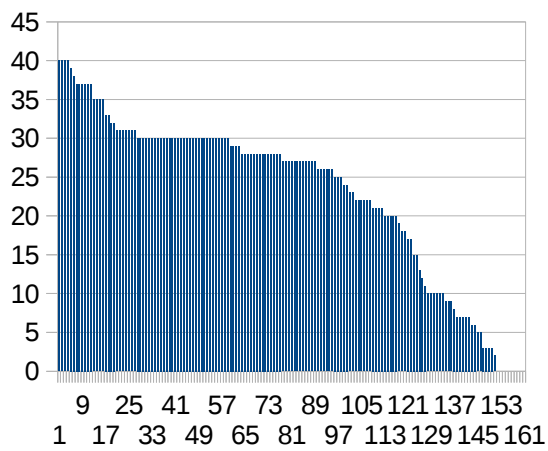


Bsp 1

Bsp 2

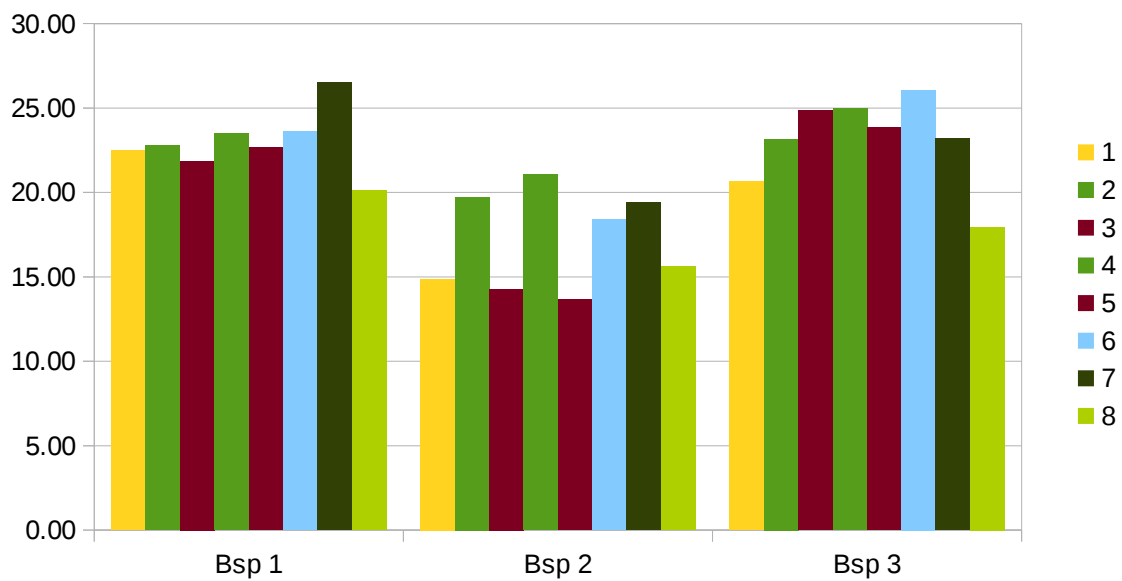
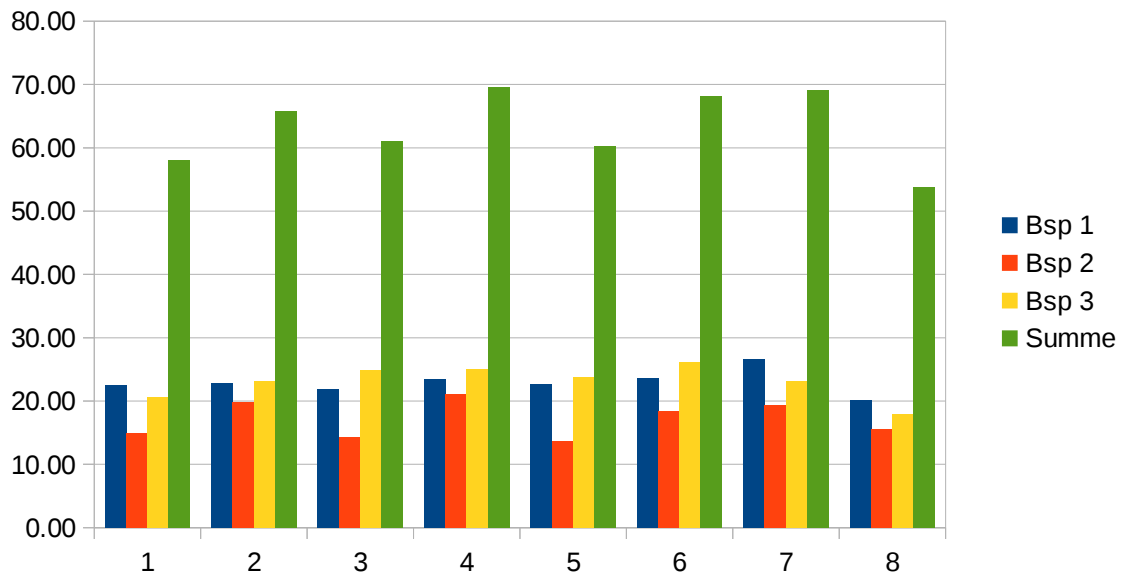


Bsp 3



Methoden 1. Test - Gruppen

Gruppe	Zahl	Teilnehmer	Bsp 1	Bsp 2	Bsp 3	Summe
1	23	23	22.48	14.87	20.65	58.00
2	24	23	22.78	19.74	23.17	65.70
3	23	14	21.86	14.29	24.86	61.00
4	23	22	23.50	21.05	25.00	69.55
5	23	21	22.67	13.67	23.86	60.19
6	22	17	23.59	18.41	26.06	68.06
7	23	21	26.52	19.38	23.19	69.10
8	23	19	20.11	15.63	17.95	53.68



Methoden 1. Test - Hörsaaleinteilung

Gruppe	Bsp 1	Bsp 2	Bsp 3	Summe
FH 5	22.57	14.30	22.18	59.05
G 1	22.48	14.87	20.65	58.00
G 5	22.67	13.67	23.86	60.19
FH 6	24.58	19.72	24.67	68.97
G 4	23.50	21.05	25.00	69.55
G 6	23.59	18.41	26.06	68.06
G 7	26.52	19.38	23.19	69.10
HS 17	21.64	16.98	21.82	60.45
G 2	22.78	19.74	23.17	65.70
G 3	21.86	14.29	24.86	61.00
G 8	20.11	15.63	17.95	53.68

Summe Punkte

