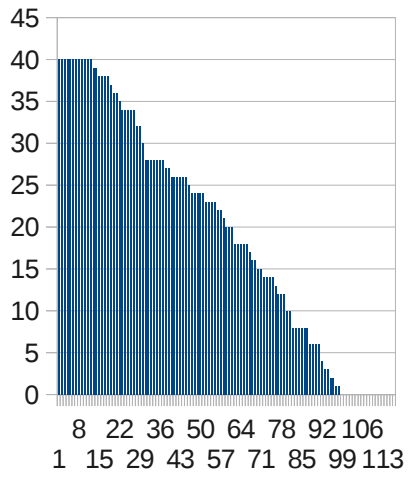
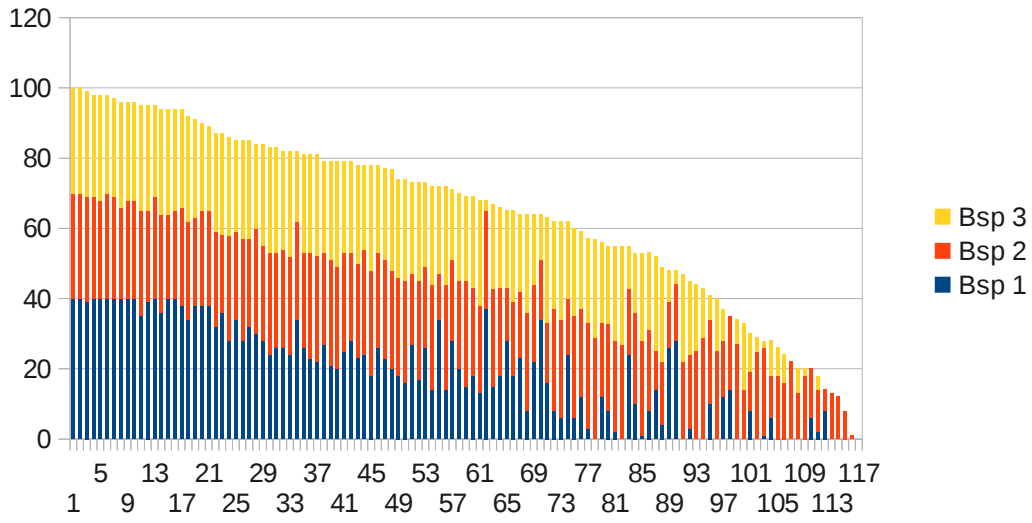
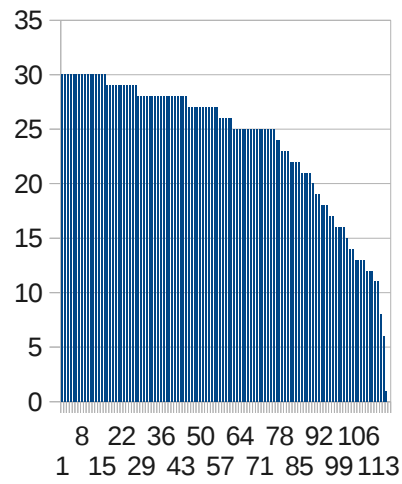


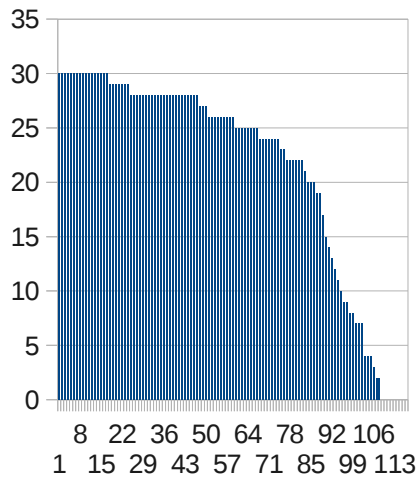
Punkteverteilung 1. Test - Statistische Physik I



■ Bsp 1

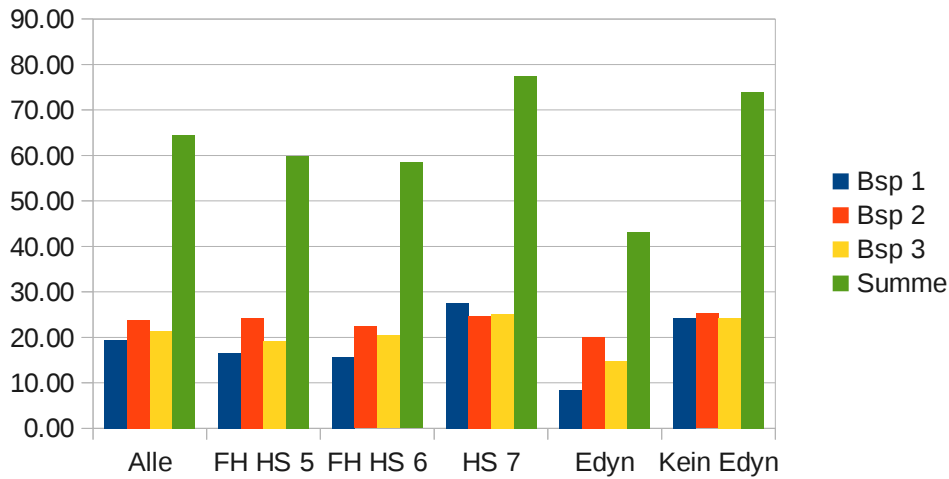


■ Bsp 2

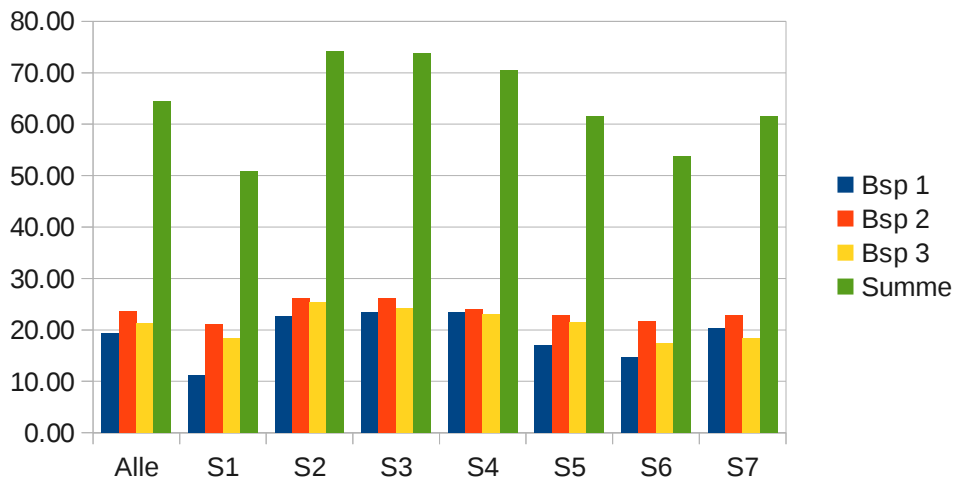


■ Bsp 3

Punkteverteilung 1. Test - Statistische Physik I



	Bsp 1	Bsp 2	Bsp 3	Summe	Zahl
Alle	19.39	23.70	21.39	64.47	117
FH HS 5	16.55	24.20	19.20	59.95	40
FH HS 6	15.63	22.40	20.42	58.44	43
HS 7	27.47	24.74	25.21	77.41	34
Edyn	8.33	20.11	14.78	43.22	36
Kein Edyn	24.30	25.28	24.33	73.91	81



	Bsp 1	Bsp 2	Bsp 3	Summe	Zahl
Alle	19.39	23.70	21.39	64.47	117
S1	11.25	21.08	18.50	50.83	12
S2	22.63	26.16	25.42	74.21	19
S3	23.44	26.17	24.11	73.72	18
S4	23.33	24.00	23.17	70.50	18
S5	17.07	22.80	21.60	61.47	15
S6	14.68	21.63	17.37	53.68	19
S7	20.38	22.88	18.31	61.56	16